

SHARED SENSIBILITIES

THE MODERN
BEACH HOMES

The modern beach home is inseparable from the society in which it existed. In post-war Adelaide, individuals were cautious in accepting new home designs, and were rigidly bound by banking, finance and estate agents' ideas of re-sale value, when buying or building a home.

However, in buying or planning the design for a second home, either for beach holidays or retirement, individuals were more relaxed and willing to experiment in the uptake of new and unusual concepts in architecture; within the region of Victor Harbor a spectrum of ideas and their uptake up can be seen; there are modern contemporary homes, homes of adventurous designs and the just bizarre.

With most modern beach homes, there was a tendency for freedom within the design, integrating new advancements much more than their counterparts within the suburbs, such as window-walls, covered terraces, open plans, clean surfaces and flat roofs

While this was a dominate tendency, at times a modern beach home was an extension of the domestic space of the family home. This 'shared sensibility' offered an overlap, with designer objects, gardens and household help. A certain pleasure was obtained through the rejection of seperate spheres, in which imagined continuities and equivalences were enjoyed whilst on holiday.



CLAYTON BEACH HOUSE 1961

LOCATION Encounter Bay

ARCHITECT John Chappel



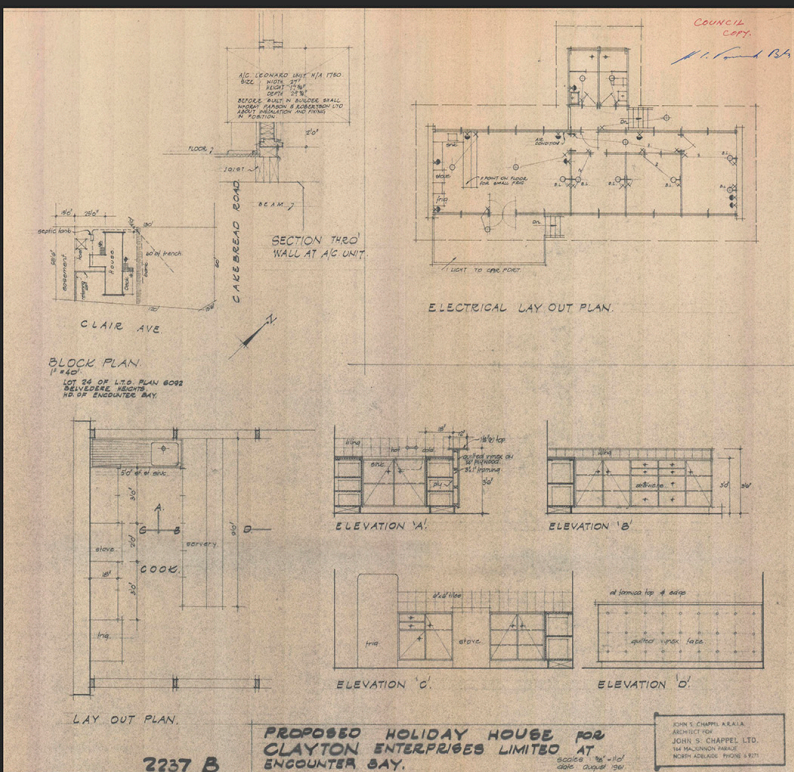
Designed for John Clayton, his wife Claire, and their three children, the Clayton beach house is on a sloped corner site in Encounter Bay.

Clayton was the Managing director of Clayton furniture, known for the 'Staykold' portable icebox and producing modular bedroom furniture items, which included the 'Cantilever Double Bunk bed', used within the children's bedrooms of the house.

Along with Clayton furniture's accountant Bob Cottle, Clayton was an enthusiastic supporter of the new. In 1960 Clayton commissioned John Chappel to design new entertainment, playroom and barbeque areas for their Myrtle Bank family home, in which the design integrated new technologies and new consumer items for comfort and entertainment: television, cocktail cabinet, refrigerator, air-conditioning and radiogram. In 1961, Chappel oversaw the construction of one of his most significant and widely publicised designs, Bob Cottle's family home in Mount Osmond (now tragically demolished).



Built for £2,750, the Clayton's 1961 family beach house was an idealised solution to the design of a modern beach home. Planned on a regularly spaced module, the home suggested pleasure and freedom in use, with an easy engagement to the surroundings. Used primarily for summer, the house has a separated exterior bathing block to allow direct access to the shower from the beach, and an elevated main floor designed to capture both views and sun, whilst providing an undercover area for car and boat storage. Planned to be predominately one room wide for cross ventilation, the house had an emphasis on the combined living-dining-kitchen area that opens out to a wide viewing deck.



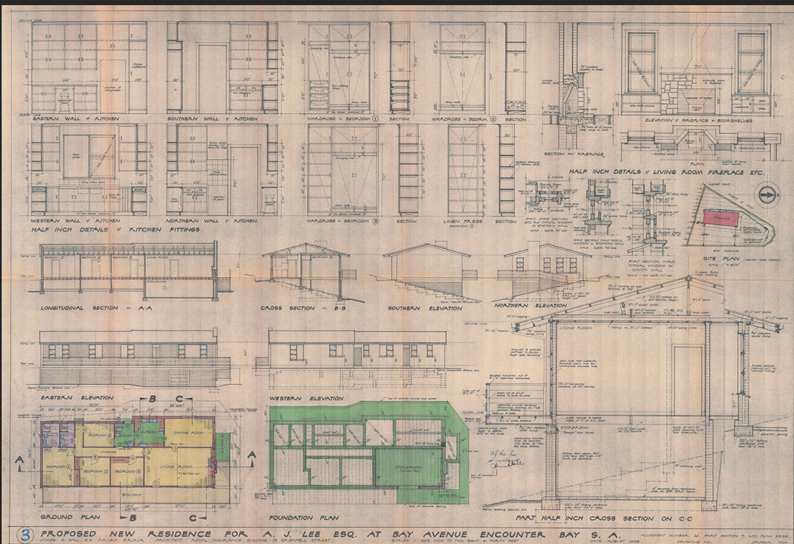
The Clayton house was capable of being erected on any allotment. It's design was adaptable, accommodating site variances through the homes 'Still Structure'. In his reporting for *The Advertiser*, Chappel claims that there was 'considerable interest' in the design. Duplicates of the Clayton house were later constructed for Martin Dallwitz in Port Willunga and in sites across Encounter Bay, with local modifications (an enclosed storage or balcony area).

SHARED SENSIBILITIES

LEE BEACH HOUSE

1958

LOCATION Encounter Bay
ARCHITECT James Hall



Located in 'fashionable' Encounter Bay, Sir Arthur James Lee's 'luxury beach house' was built for £8000 when he was aged 46. 'Simple in shape and appearance', Architect James Hall designed the home during his presidency of the then South Australian Institute of Architects.

Arthur Lee, known as 'Mert', was a member of a well-known family of hoteliers and a director of Lee's Hotels. During World War II he rose to the rank of Lieutenant Colonel, serving in the 2/27th and 2/16th battalions, finishing as Commanding Officer of the 2/9th battalion, having crossed the Kokoda Trail twice. In 1958 he was elected state president of the RSL and in 1959 was made a Companion of the British Empire. He served as national president of the RSL from 1960-1974 and was knighted in 1966.

Along with these accomplishments 'Mert' and his two brothers, Bob and Jack, were well known in the 1950s as very successful racehorse owners, including the 1950 Melbourne Cup winner 'Comic Court' which was inducted into the Australian Racing Hall of Fame in 2009. So successful were their horses that the Adelaide News dubbed them 'the Lucky Lees'.

Occupying a secluded position surrounded by cool green lawns and with easy access to the beach, house and garden achieve the effect of an ease of living and enjoyment of simple outdoor space. Attuned to existing site conditions and scenic surroundings, the house works with the fall of site to create space below the main floor for boat storage. Cantilevered floor beams suspend a viewing and sun deck above grade, while picture windows have been integrated within a façade consisting of polished Australian Oak.

Bedrooms have integrated storage and wall cupboards, with the main bedroom leading to an ensuite. A concealed steel beam in the living room ceiling space, enables a generous sized room in which there is 'as much free-living area as possible', with a fireplace for cold nights and picture windows that bring the view indoors.

Furnishings were 'lightweight and portable', where the whole design gives way to an 'air of gaiety and easy informality' appropriate to a holiday house. For domestic help, the home had a housekeeper.

SHARED SENSIBILITIES

Page 12 - The Atlantic City, Pa., Inquirer

Harbor View At Holiday House

By JOHN CHAPPEL, Staff Writer

Harbor View at Holiday House is a new type of home for the family. It is a two-story, brick and concrete structure with a modern design. The house features a large living area, a dining room, a kitchen, and a bathroom. It is located in a quiet neighborhood and is priced at \$12,500.

HOMES * BUILDING * HANDYMAN

Emphasis On Suburban Development

By BILL MILLER, Staff Writer

Suburban development is being emphasized by the building industry. This is due to the fact that many people are moving out of the city and into the suburbs. This has led to a boom in the construction of new homes in the suburbs.

SOMETHING NEW TO YOU

Lighter For Car

Attractive New Family Shampoo

Brighter

GARDENING SECTION

Workshop Wrinkles

By BILL MILLER, Staff Writer

Workshop Wrinkles is a new book that provides information on how to set up a workshop. It covers topics such as the location of the workshop, the type of equipment to use, and how to organize the workshop.

Bulbs To Flower In Autumn

By BILL MILLER, Staff Writer

Bulbs To Flower In Autumn is a new book that provides information on how to grow bulbs that will flower in the autumn. It covers topics such as the types of bulbs to grow, how to plant them, and how to care for them.

When Berry Crops Finish

By BILL MILLER, Staff Writer

When Berry Crops Finish is a new book that provides information on how to care for berry crops after they have finished. It covers topics such as how to prune the plants, how to fertilize them, and how to protect them from pests.

Easily-Grown Border Plants

By BILL MILLER, Staff Writer

Easily-Grown Border Plants is a new book that provides information on how to grow border plants. It covers topics such as the types of plants to grow, how to plant them, and how to care for them.

To Avoid The Bare Period

By BILL MILLER, Staff Writer

To Avoid The Bare Period is a new book that provides information on how to avoid the bare period in a garden. It covers topics such as how to choose plants that will bloom at different times, how to plant them, and how to care for them.

HARRIS, SCARFE LTD., RUNDLE & GRENfell, ST. 8 0224

CLAYTON BEACH HOUSE 1961

Page 26 - The Atlantic City, Pa., Inquirer

Steel, Fibreglass Holiday House

Most of today's houses are constructed of wood and brick. However, a new type of house is being built. This is a house made of steel and fibreglass. It is a modern, two-story house with a large living area, a dining room, a kitchen, and a bathroom. It is located in a quiet neighborhood and is priced at \$15,000.

HOMES * BUILDING * HANDYMAN

Efficient Distances

By BILL MILLER, Staff Writer

Efficient Distances is a new book that provides information on how to travel efficiently. It covers topics such as how to choose the best mode of transportation, how to plan your route, and how to save money on travel.

MORE LIVEABILITY—MORE VALUE with LLOYDS WINDOWS

SEE HOW LLOYDS WINDOWS BRING OUTSIDE INSIDE SO GRACEFULLY

LLOYDS

Building Prospects Bright --- Except In Housing

By BILL MILLER, Staff Writer

Building Prospects Bright --- Except In Housing is a new book that provides information on the building industry. It covers topics such as the current state of the industry, the outlook for the future, and the challenges facing the industry.

TO REMOVE STAINS

GLASS TO SCRAPE PAINT

BY OUR REAL ESTATE WRITER

JUST

ON YOUR OWN LAND

CRAIL 1957

Page 12 - The Atlantic City, Pa., Inquirer

HOMES * BUILDING * HANDYMAN

Encounter Bay Holiday House

By BILL MILLER, Staff Writer

Encounter Bay Holiday House is a new type of home for the family. It is a two-story, brick and concrete structure with a modern design. The house features a large living area, a dining room, a kitchen, and a bathroom. It is located in a quiet neighborhood and is priced at \$12,500.

GARDENING SECTION

To Brighten Dull Spot

By BILL MILLER, Staff Writer

To Brighten Dull Spot is a new book that provides information on how to brighten a dull spot in a garden. It covers topics such as how to choose plants that will bloom at different times, how to plant them, and how to care for them.

Re-developing The Central Market

By BILL MILLER, Staff Writer

Re-developing The Central Market is a new book that provides information on how to re-develop a market. It covers topics such as how to choose the location of the market, how to plan the market, and how to care for the market.

Protect Timber

By BILL MILLER, Staff Writer

Protect Timber is a new book that provides information on how to protect timber. It covers topics such as how to choose the type of timber to use, how to plant them, and how to care for them.

HIGGSAN'S DESIGN WIDENS ITS SCOPE

By BILL MILLER, Staff Writer

HIGGSAN'S DESIGN WIDENS ITS SCOPE is a new book that provides information on how to design a house. It covers topics such as how to choose the style of the house, how to plan the house, and how to care for the house.

3-in-1 BLUEPRINT worth 10¢ FREE INSIDE!

STORAGE FOR SMALL ITEMS

Workshop Wrinkles

FRUIT FLY MENACE RING 79-2236

To report maggots in fruit
Department of Agriculture

LEE BEACH HOUSE 1958

Modern Beach Homes 1950 – 1970 explores the allure of the architect designed beach house, in a changing South Australia after World War II.

During a period of an expanding market of holiday homemakers, the modern beach home is presented under the themes of

- 'openness and exposure'
- 'privacy'
- 'shared sensibilities'

The map shows the location of each modern beach home, in relation to each other and their natural surroundings.

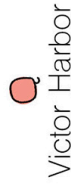
- * Victor Harbor
- * Encounter Bay
- * Hayborough
- * McCracken
- * Aldinga

Please note:
These homes are private residences.
Please respect the owners privacy.

This exhibition is supported by



GROSE BEACH HOUSE



Victor Harbor



HOUSE FOR A BACHELOR



Encounter Bay



LING BEACH HOUSE



McCracken



IRWIN BEACH HOUSE



Aldinga



SHEARER BEACH HOUSE



Hayborough



FAIRBAIRN



Adare Park



CLAYTON BEACH HOUSE



Encounter Bay



CRAIL



Victor Harbor



LEE BEACH HOUSE



Encounter Bay

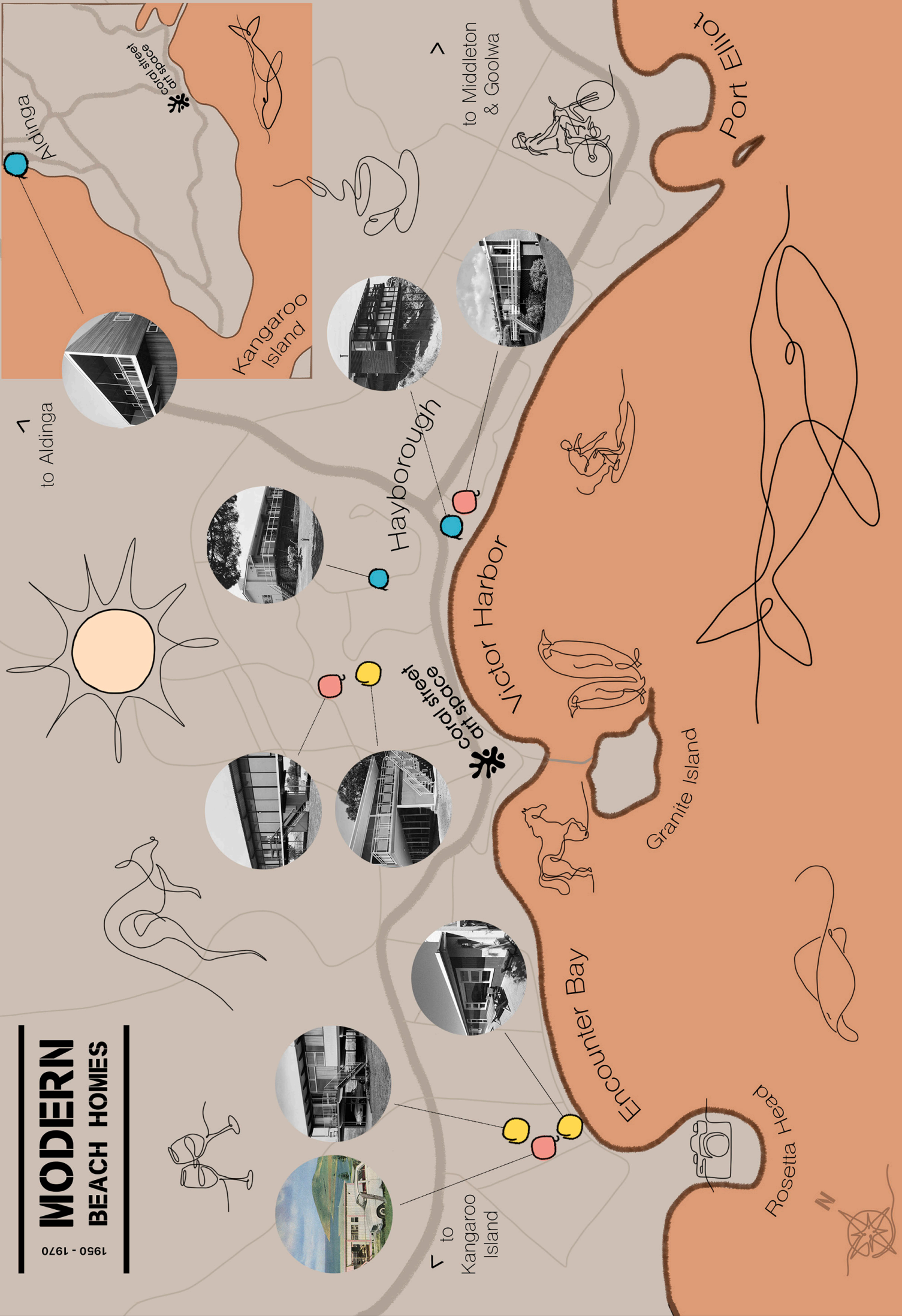


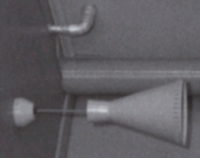
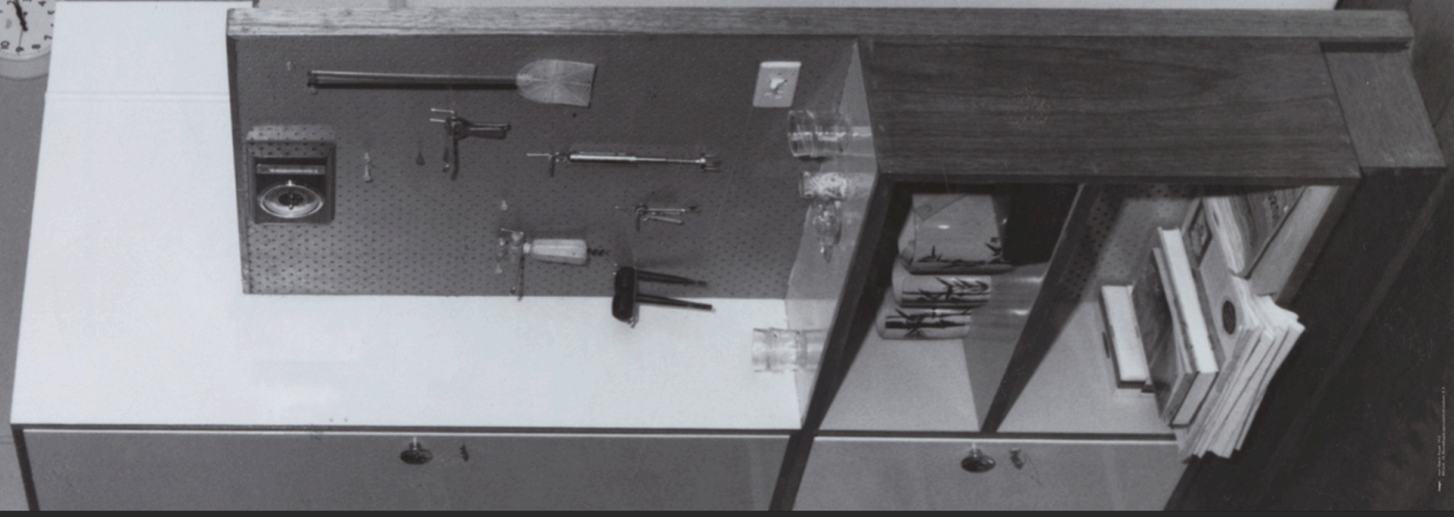
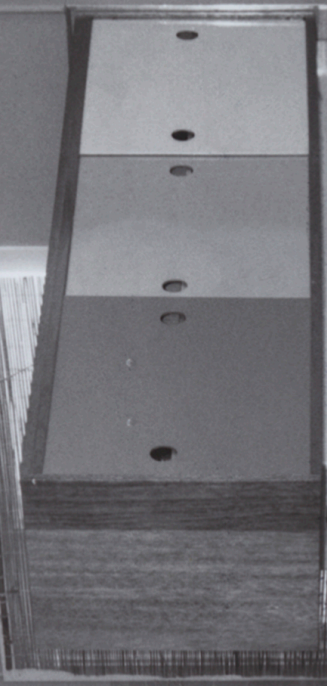
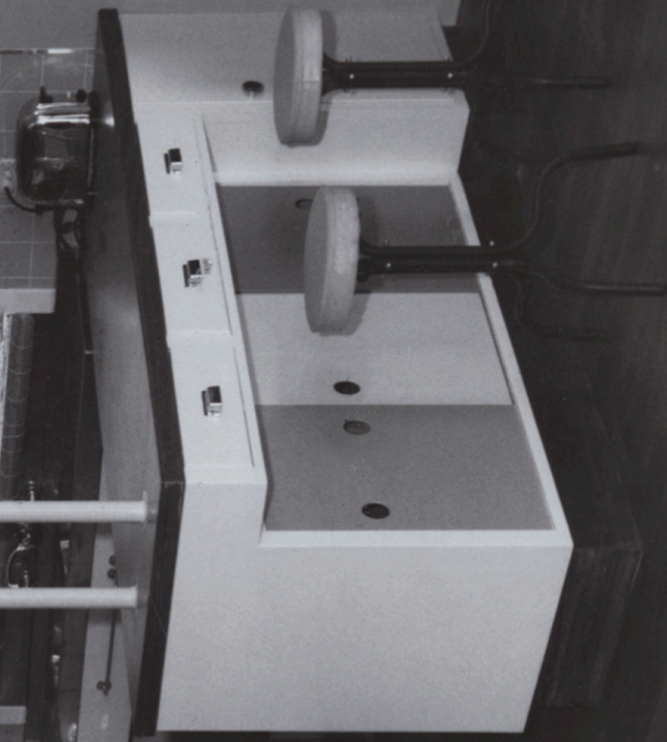
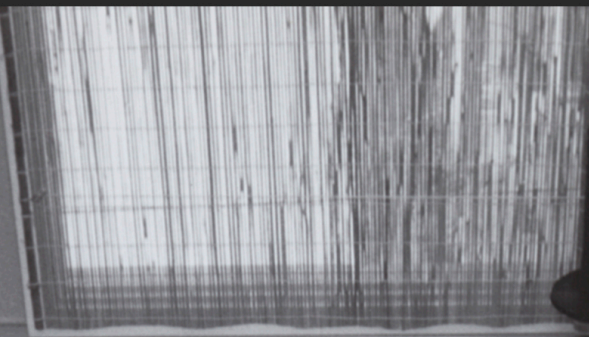
MAP

Project locations
on the
Fleurieu Peninsula

MODERN BEACH HOMES

1950 - 1970





Modern Beach Homes 1950 – 1970
Coral Street Art Space
13th January 2023 – 26th February 2023

Curation

Dr. James Curry, University of South Australia

Exhibition design & production

Chris Summer

Exhibition installation

Chris Summer
Maria Ellers

Video production

Paul Moses

Furniture supplied by
Adriel Booker of 'Found'

Special thanks to

Dr. Julie Collins, Architecture Museum, University of South Australia
Craig Batty, University of South Australia
Mark Gilbert and Sharon Frost, State Library of South Australia
James Muecke AM CM
Mena Muecke OAM
Peter & Trish Lee
Melanie Champion-Crespigny
Simon Chappel
Suzie Cottle
Andrea Willis
Sarah McGrath
Diana Laidlaw AM



